

PowerFilm CyberView User's

Studio Scanner* PF 135+ Manual**

*Information in this manual pertains to the PowerFilm Studio edition ONLY
Standard, PowerFilm and the Plus, do not have the capabilities that the Studio
edition offers

**CyberView PF135software is the scanning software for the PowerFilm Scanner

FEDERAL COMMUNICATIONS COMMISSION (FCC) STATEMENT

This Equipment has been tested and found to comply with the limits for a class B digital device, pursuant to Part 15 of the FCC rules. These limits are designed to provide reasonable protection These limits are designed to provide reasonable protection against harmful interference in a residential installation. This equipment generates uses and can radiate radio frequency energy and, if not installed and used in accordance with the instructions, may cause harmful interference to radio communications. However, there is no guarantee that interference will not occur in a particular installation. If this equipment does cause harmful interference to radio or television reception, which can be determined by turning the equipment off and on, the user is encouraged to try to correct the interference by one or more of the following measures:

- Re-orient or relocate the receiving antenna.
- Increase the separation between the equipment and receiver.
- Connect the equipment into an outlet on a circuit different from which the receiver is connected to.
- Consult the dealer or an experienced radio/TV technician for help.

Warning:

Use only shielded signal cables to connect I/O devices to this equipment. You are cautioned that changes or modifications not expressly approved by the party responsible for compliance could VOID your authority to operate the equipment

TABLE OF CONTENTS

<u>Unpacking your scanner</u>	4
<u>Installing Software</u> - includes the hardware driver	6
Installing Hardware	7
<u>Sorting & Cleaning Film strips</u>	8
Loading Filmstrips	10
<u>How to Scan</u>	11
Configure Settings	
Connecting Multiple PowerFilm Studio together`	12
<u>Main User Interface</u>	13
<u>Scan Settings defined</u>	14
Scan Settings - Scanning	15
<u>Tips & Troubleshooting</u>	
Reference video links	16
<u>Technical Support Contact information</u>	19

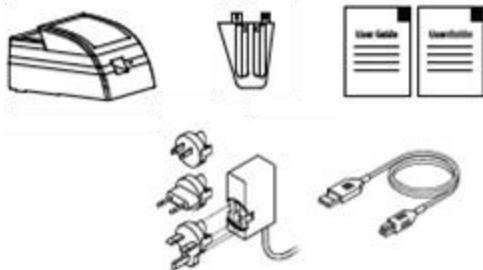
Unpacking your Scanner

Check the package content before getting started. For Quick Installation please refer to Quick Installation Guide. Important! Save the original box, receipt and packing material should they be needed for future shipping needs.

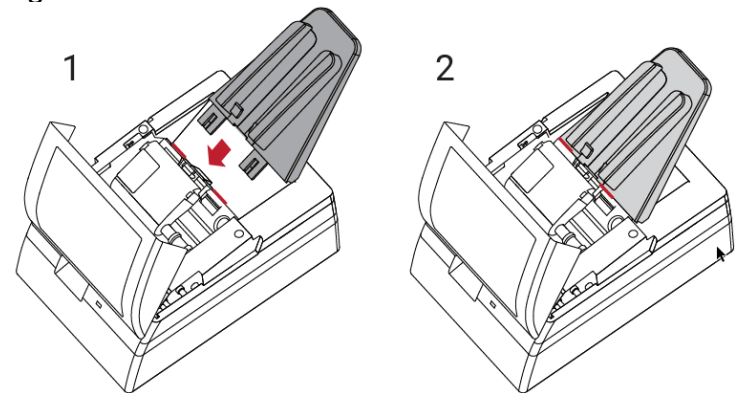
Package Contents

- Film Scanner / Film feeder
- Universal Power Adapter w/interchangeable plug(US/EU/UK)
- USB 2.0 Cable
- Quick Reference User Guide & User Manual

Unpack contents and remove protective tape.



Assembling the unit, once unpackaged, and all the shipping tape is removed, insert the film feed guide into the unit



Please be sure the film feeder is inserted properly and secure before proceeding.

Warning!

Using any other power adapter can severely damage the scanner and will **VOID** the product warranty.

GENERAL GUIDANCE:

- Only use the supplied USB-Cable. Connect the computer to the scanner directly using the USB 2.0 cable.
- Do not use a Hub or extension cable. Only use the USB ports on the rear of desktop computers is supported
- If there are any other devices (multifunction device, printers, scanners, webcam) connected to the computer via USB make sure they are powered off.
- A minimum of 4 GB RAM (Windows/Mac) and 30GB Hard drive space minimum is required. 6GB RAM or more highly recommended.

Operating Ambient Temperature Range 50° to 104°F (10° to 40°C)

Note: Do not turn on the scanner unless it is within this range. If the scanner has been stored or transported outside of this range, allow it to return to within this range before turning it on. Operating Ambient Humidity Range 15% to 76% relative humidity (non-condensing): Do not turn on the scanner unless it is within this range. If the scanner has been stored or transported outside of this range, allow it to return to within this range before turning it on. Operating Ambient Humidity Range 15% to 76% relative humidity (non-condensing)

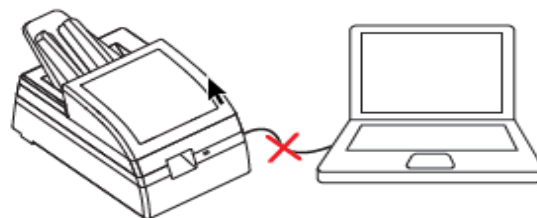
Note: If the scanner is stored or to be transported in cold temperature and then brought into a warm / humid environment condensation may occur.

WARRANTY INFORMATION NOTICE

Pacific Image warrants this product to be free from defects of material and workmanship for 1 year from the ORIGINAL date of purchase.

Installing Software

Be sure to install the Software Application **BEFORE** connecting the scanner



Ⓐ DO NOT CONNECT the scanner before installing the software. If you see a "Found New Hardware" screen, click "Cancel" and disconnect the scanner.

Download the appropriate software using this online link [Download Drivers](#)

Installing Software - Download the software using the link provided above, selecting the correct version

a. Once downloaded you need to run the installer to install the software on your system

For issues with Browsers blocking the download see [How To Download here](#)

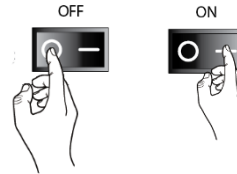
PC: Open the Downloads folder locate the installer file **PowerFilm_Windows....** Double click the installer to begin Installing, you may encounter a warning Windows protected your PC Select "More info..." and choose Run Anyway

Mac: Open downloads locate the installer file **PowerFilm_Mac xxx..** New security protocols require these steps to allow the software installation. **Mac OS 10.7-10.12** - Hold down the "Control" key on the keyboard and click on the software installer package, then click on "Open" then you will see an unidentified developer warning message select "Open" to begin the installation process **Mac OS 10.13** - Hold down the "Control" key on the keyboard and double click on the software installer, then you will see an unidentified developer warning message, select "Open" to begin the installation

Installing Hardware

Installing the Hardware

- a. Once the software has been successfully installed and the system rebooted, if required you are ready to connect the scanner, Locate the power switch on the back of the device and make sure it is in the OFF position (circle in) before connecting



- b. Assemble the power adapters 2 pieces together if you have not done so already, by sliding the plug connector into the slot on the adapter until it clicks into position.
- c. Connect the AC adapter to the back of the scanner and connect the adapter to a suitable power outlet
- d. Connect the USB cable to the back of the scanner then to the appropriate port on the computer (no hubs, front ports)

Please Note: When installing your new scanner onto a Windows system that already has another USB connected Flatbed scanner or All-in-one Scan/Copier/Printer device connected via USB, be sure to power them off to avoid hardware conflicts, this does not apply to Wi-Fi connected device, If you will be using a Desktop computer, please connect only to the rear USB ports, do not use any type of USB extension cable or hub to connect the scanner, data transfer is hindered when doing so causing the software to not respond, or not communicate at all.

- a. When considering scanner placement be sure to leave sufficient room in front of the unit for the film to come out, otherwise your strips could end up on the floor.
- b. Power on the scanner

FIRST TIME USE: Give this a couple of minutes for your computer to connect the scanning device to the correct hardware drivers installed previously

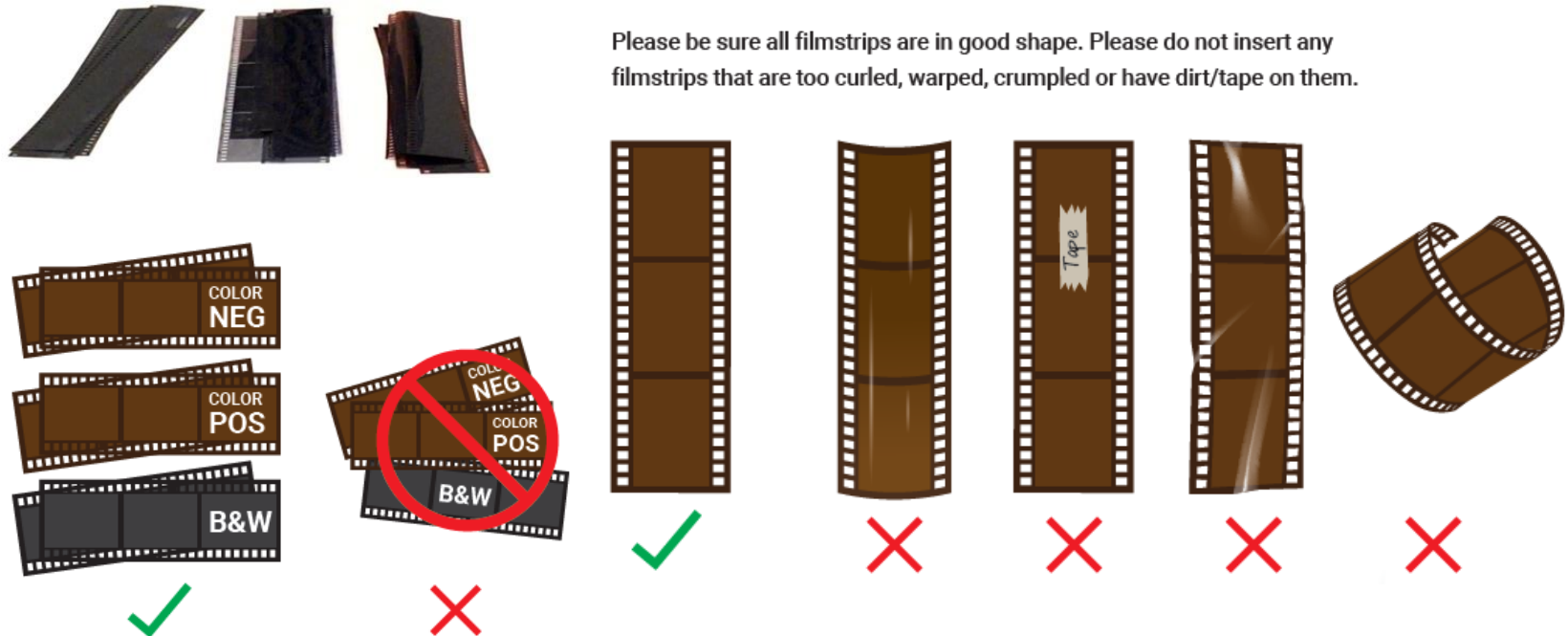
- g. Open the scanning software **PowerFilm** software from the desktop icon, or (MAC) under Apple menu – Go – Applications **PowerFilm**

Sorting & Cleaning Filmstrips

The scanner is capable of scanning color positive, color negative and black & white 35mm filmstrips, you will want to sort these by type into their respective groups before beginning to scan, **EXAMPLE:** Color positives together, color negatives together and so on, the scanner can hold up to 10 filmstrips at a time, in sizes ranging from 2 frames up to 6 frames, this unit does not scan rolls of film

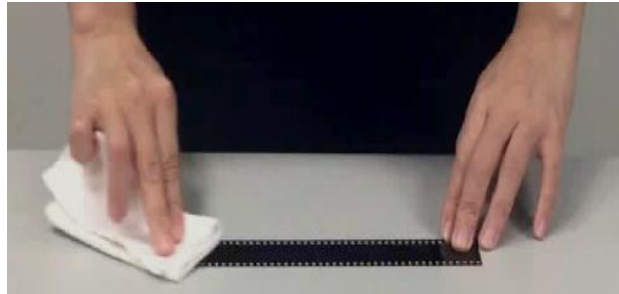
This scanner does not support scanning any other sized filmstrips. (i.e. 110, 126 or APS are not supported),

Note: Strips must be in good condition, If filmstrips have any jagged or gnarled edges please trim them so that they are smooth before inserting into the scanner. No curled strips, and no tape.



Sorting & Cleaning Filmstrips continued

If the films have dust on them, clean them before inserting into the scanner, using a 98% or higher rubbing alcohol solution and a soft dry lint free cloth, dampen cloth and wipe film clean, turn over and wipe the other side as well, let the films dry completely before inserting into the scanner



For video instruction please [Click Here](#)

Loading Filmstrips

Insert filmstrips with the emulsion (DULL) side down (SHINY side up), when inserting strips you may need to lift the cover to be certain your film strips are being placed properly under the guides on the film feed holder (**Fig.1 & 1a.**), these guides aid in the negatives feeding properly into the scanner. When inserting a strips of 4 frames they need to be inserted as far in as the line shown in (**Fig. 2**) to be accepted by the scanner for scanning, if not inserted fully it cannot grab the film and begin scanning. 6 frame strips will stick out above the holder, the software acknowledges proper insertion on the lower left of the main UI for directions on how to loading capacity and configuring scan settings please [Click Here](#):

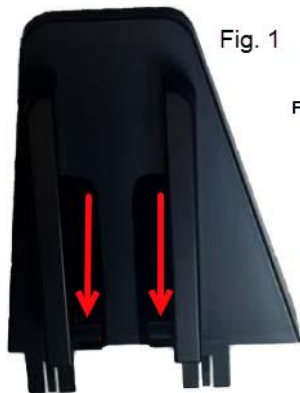
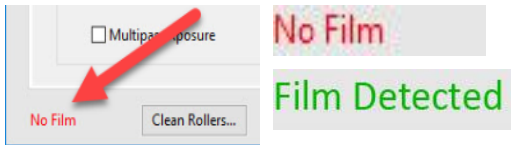


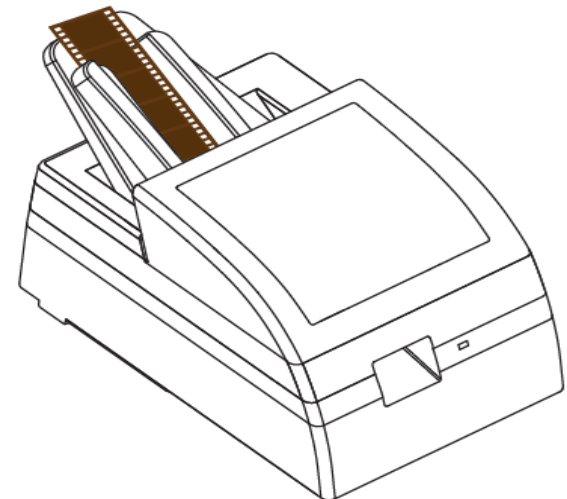
Fig. 1

Fig. 1a



Fig. 2

You can scan 1-10 filmstrips at a time, of 2-6 frames in length. Please note PowerFilm cannot process individual frames. when inserting, film strips should be inserted with the emulsion (dull) side facing down.



How to Scan

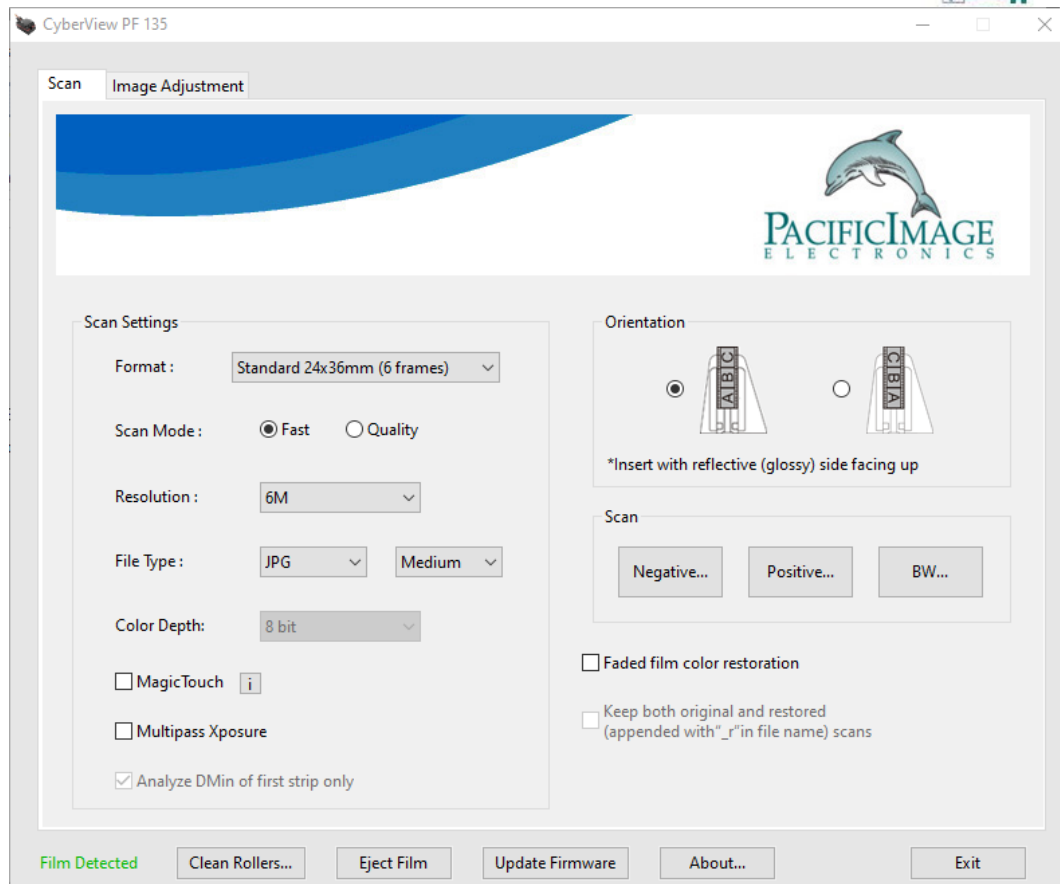
Scan - User Interface: (for using Multiple units (up to 4 see page 12))

When scanning it is best to not run other tasks on the computer for best performance

- Power on the scanner, Wait for the blue light to become solid indicating it is ready to use
- Open the PowerFilm – CyberView PF135 software application:

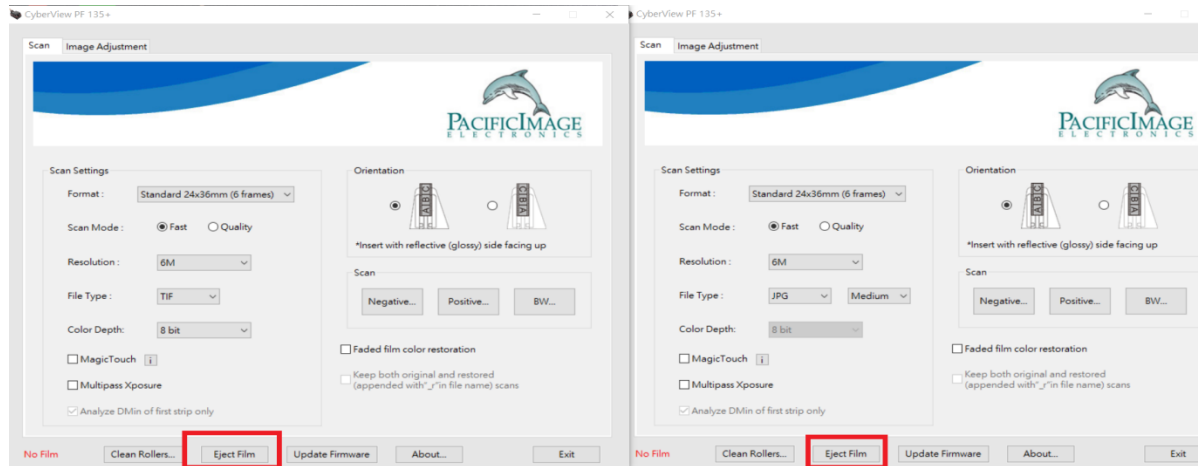
PC: Go to Windows Desktop – PowerFilm icon

MAC: Apple Menu – Go – Applications - PowerFilm App icon



Linking multiple PowerFilm Studio's together

1. If you have multiple PowerFilm Studio units, connect the scanners (a maximum of 4) to computer, and open the software.
2. There will be multiple UIs depending on how many PowerFilm Studio you have.
3. Each PowerFilm Studio will have one UI. Please use the "Eject Film" button to check the UI with the specific PowerFilm Studio. When pressing "Eject Film", the blue light on the specific PowerFilm Studio unit will flash indicating which one is selected

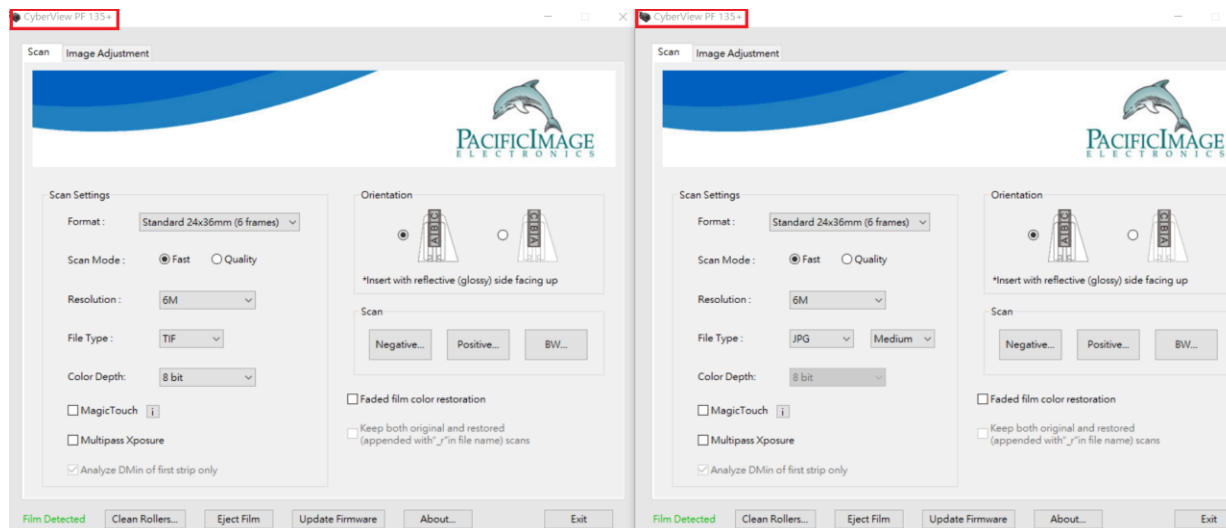


How to Scan

When scanning it is best not to run other tasks on the computer for best performance

- a. Power on the scanner, Wait for the blue light to become solid indicating it is ready to use
- b. Open the PowerFilm – CyberView PF135 studio software application:

PC: Go to Windows Desktop – PowerFilm+ icon -- **MAC:** Apple Menu – Go – Applications - PowerFilm App icon



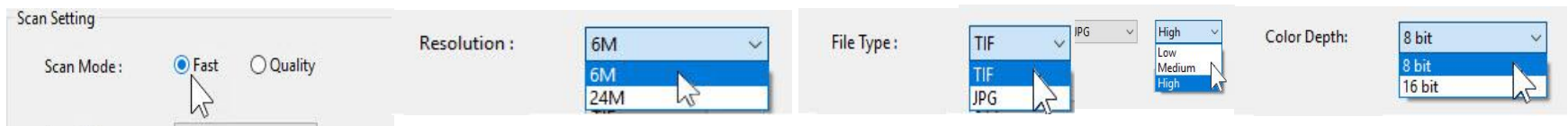
Configure Settings

Select your scan settings options (definitions of features located on page 13)

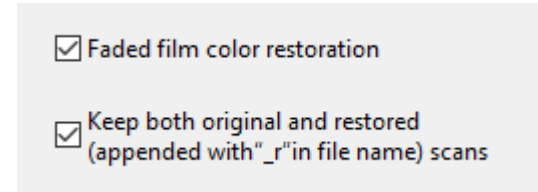
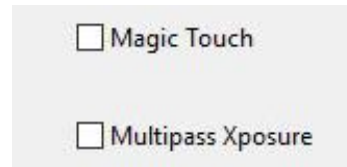
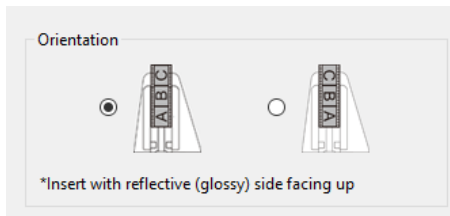
- a. **Scan Format** Select your size film frames
Half Frames, Standard or Panoramic



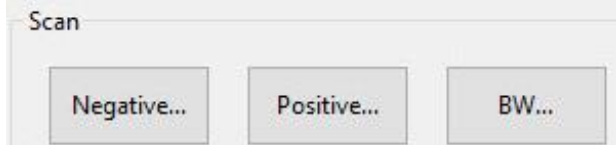
- b. **Scan Mode** Fast or Quality, **Resolution** 6M or 24M, **File type** TIF or JPG, **Color depth** 8 or 16



Select the filmstrip **Orientation**, **Magic Touch** and **Multi Xposure**, and if you want **Faded film color restoration** and **Save both originals and restored copies**

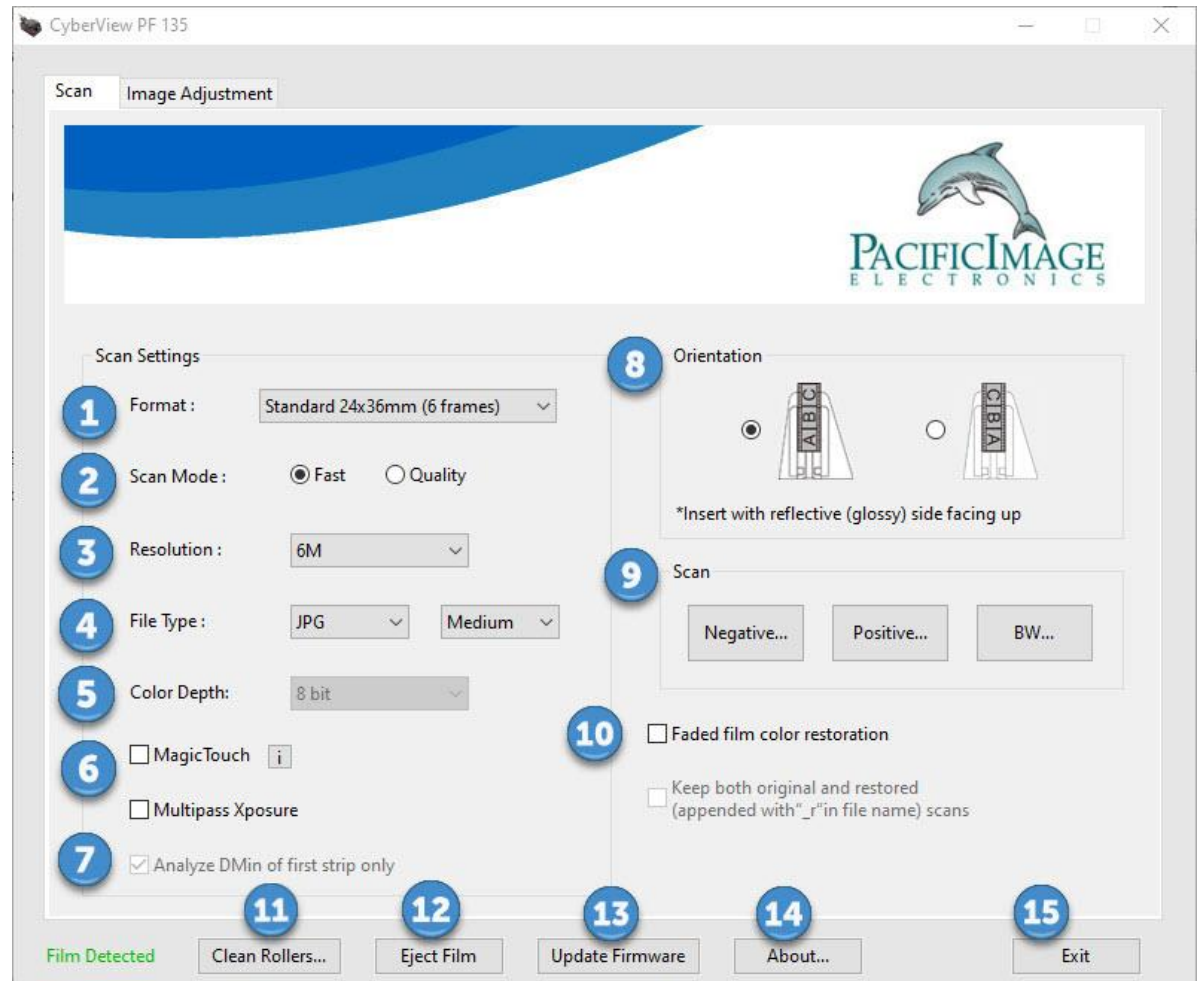


Select the film type Negative, Positive or Black & White to access the scan/save settings area



Main User Interface

- 1) **Format - Select Film frame sizes:** Half Frames, Standard or Panoramic
- 2) **Scan Mode** – Fast or Quality - Fast mode offers a fixed exposure time, and quality mode adjusts the exposure time according to the film,
- 3) **Resolution – 6M/24M** - 6Megapixels and 24 Megapixels
- 4) **File Type** - TIF or JPG, TIF is an uncompressed file format better for post scan editing, JPG Low, Medium or High , the high setting produces an image with the least amount of compression, Low produces smaller files.
- 5) **Color Depth** – 8 or 16 bit – 8 bit color is equal to 8bits per color channel $8 \times 3 = 24$ bit color, 16 bits per color channel $16 \times 3 = 48$ bits color
- 6) **Analyze Dmin of first strip only** - Reads the first film strip for information
- 7) **Magic Touch** – Removes dust and scratches when enabled, using Infrared technology
- Multipass Xposure** – This takes three individual exposures, and then combines them for the final image, to produce the best quality output.
- 8) **Orientation** – Select which direction your films will be facing before scanning so the software can re-orient them during the scan process
- 9) **Scan** – Select your film type
- 10) **Faded Film Color Restoration**
Restores faded films and allows you to save corrected and original copies
- 11) **Clean Rollers** – This accesses directions for cleaning the rollers (this should be done every 100 scans)
- 12) **Eject Film** – Ejects inserted films (all)
- 13) **Update Firmware** – After downloading firmware updates online click here to apply it
- 14) **About** – Provides scanner hardware and software information
- 15) **Exit** – Exits the program prompting you to save your settings, file directory, custom names etc.



Scan Settings defined (Scanning started window)

- 1) **Export file folder:** Choose where to save the scanned files to
 - 2) **Filename example:** Will show your filename and number
 - 3) **Directory:** Display where the files are saving to
 - 4) **Create Subfolder:** When checked you generate a sub-folder automatically with the days date
 - 5) **Base File Name:** This filename is used for every scan and it adds a number to it automatically example shown beside #2 in illustration
 - 6) **User Defined Start Number** This lets you select the start number for this batch sequence of scans
 - 7) **Subject:** Lets you apply a subject to the this batch sequence of scans
 - 8) **Capture date:** Lets you apply the date the image was taken*
 - 9) **Keywords:** "Tags" enter keywords to help identify the images*
 - 10) **Comments:** Add comments when scanning in JPG format
 - 11) **Start Scan:** Starts the scanning process
 - 12) **Exit:** This closes the scan settings window
- *(example shown on page 16)

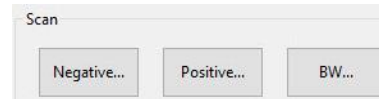
The screenshot shows the 'Scan Settings' dialog box. It has a title bar 'Scan Settings' and a subtitle 'Input the film strip information'. The settings are as follows:

- Export file folder:** A button labeled 'Choose the image export folder ...' (Callout 1).
- Filename Example :** 'image0001.jpg' (Callout 2).
- Directory :** 'C:\Users\Owner\Pictures\2019-XX-XX_001\images0001.jpg' (Callout 3).
- Create Subfolder:** A checked checkbox (Callout 4).
- Base File Name :** A text box containing 'image' (Callout 5).
- User Defined Start Number:** A text box containing '1' (Callout 6).
- Subject:** An empty text box (Callout 7).
- Capture Date (YYYY/MM/DD):** Three text boxes for year, month, and day, separated by slashes and dropdown arrows (Callout 8).
- Keywords (Use ";" as separator):** An empty text box (Callout 9).
- Comments:** An empty text box (Callout 10).
- Start Scanning:** A button at the bottom left (Callout 11).
- Exit:** A button at the bottom right (Callout 12).

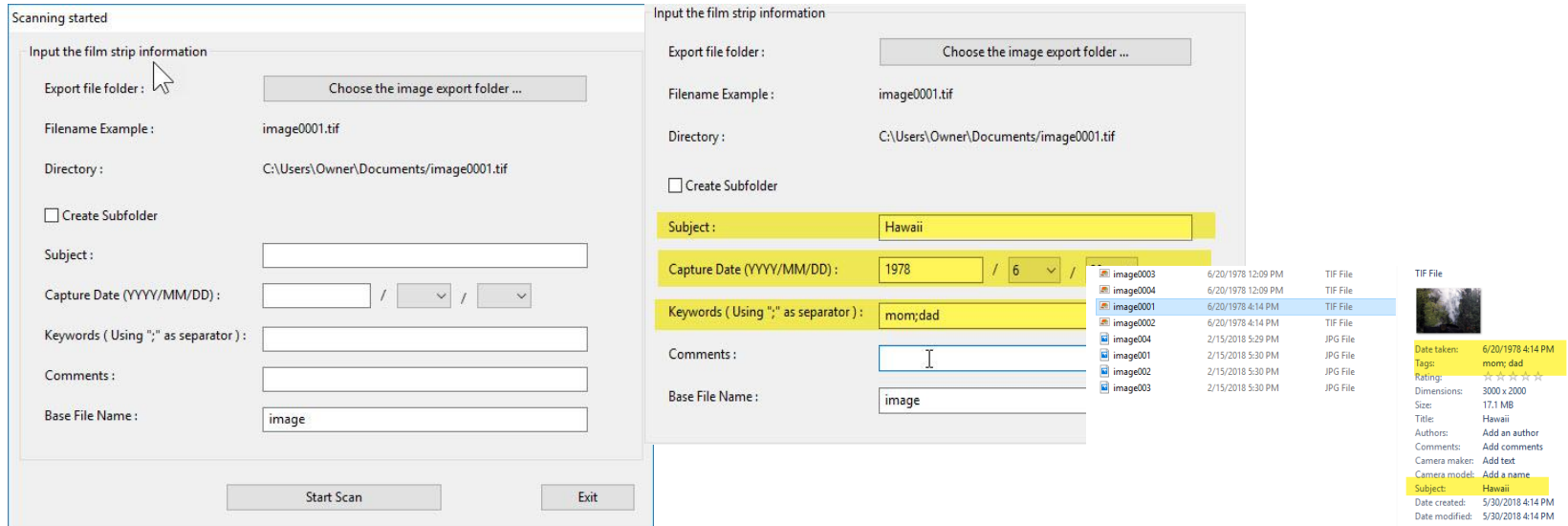
Scan Settings - Scanning

Once the film has been loaded

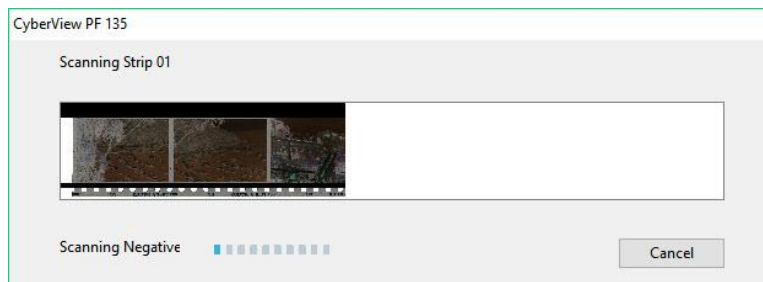
a. Select your film type to setup the save to options



b. Scanning started window, here you can input the filmstrip information



c. As the scanner is processing the images you will see the progression on the thumbnail panel

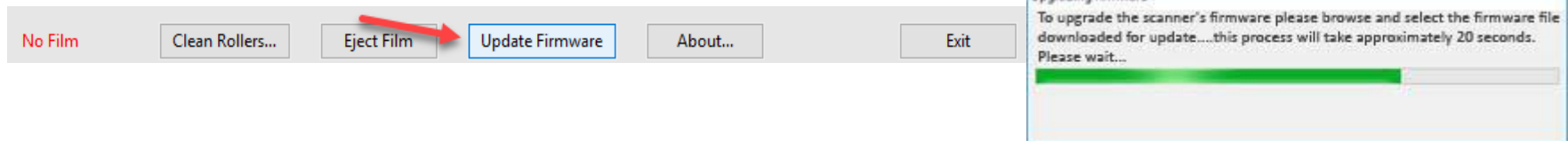


Tips & Troubleshooting

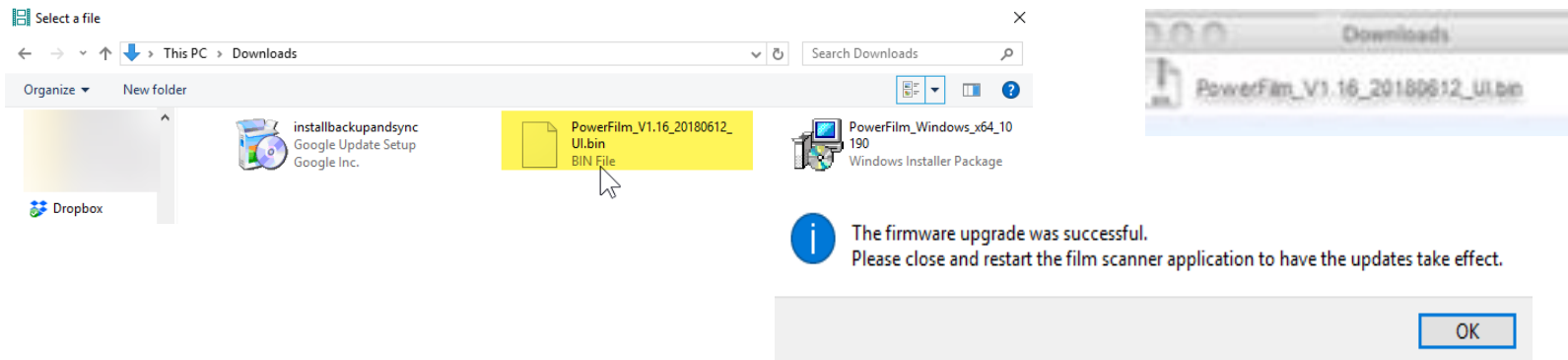
[Download software & firmware updates](#) (download link)

Updating the scanners firmware -

Download the latest firmware file, save it to your Downloads directory, once download is complete, Turn on the Scanner wait for the solid blue light then open the CyberView PF135 (PowerFilm) software, in the main user interface locate the Update firmware button



this will open a file explorer window, browse to the downloads directory on your PC or Mac and locate the firmware file by Name: PowerFilm_V1.xxxx.UI.bin double click on this file to begin the firmware update process.



Once the firmware install is complete click OK, this will close the CyberView PF135 interface, the scanner will still be processing this update, the blue light will continue to flash until it has completed, do not open the scanning Software at this time, once the procedure is complete the light will be solid and may now resume using CyberView PF135 for scanning.

Tips & Troubleshooting

Removing stuck film – You have 3 options to perform this task video reference [Troubleshooting](#) (video link)

As using options 1 & 2 will eject ALL filmstrips through the unit, please first remove any awaiting strips from the film feeder, then:

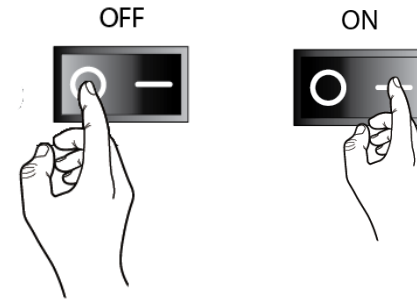
Option 1. Select the Eject button from the software interface.

Option 2. Restart the scanner by powering it off for a few seconds, then turning it back on.

Option 1

Eject Film

Option 2



Tips & Troubleshooting continued...

[Removing dust from inside the unit](#) (video link, info begins at 1:25)

Dust inside the scanner can be detrimental to scans, leaving lines and distortions on the images, to avoid such issues clean your scanner regularly, using an air (bulb style) manual blower designed for electronic equipment to blow off your films, both sides and inside your scanner to keep it clean. See companion video for demonstration.

[Cleaning the rollers inside the unit](#)

To clean the rollers inside the unit, you will want to use a soft lint free cloth to wipe the transport rollers and film feed area clean

1. Power off and disconnect power from the unit
2. Remove film feed chute, Wipe the film feed chute with clean lint free cloth
3. Lift open the cover to access the inside, Wipe upper external roller to remove dust
4. Lift the internal roller cover, wipe interior rollers, top and bottom
5. Wipe the film white exposure area
6. When complete, close the internal film roller cover and the main unit cover

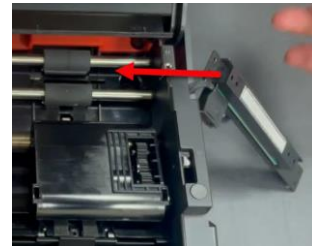
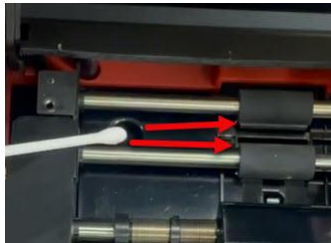
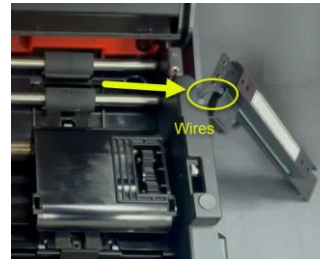
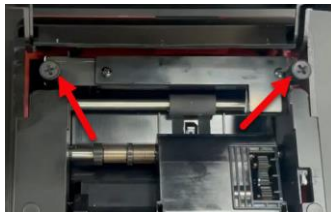


Tips & Troubleshooting continued...

1. Power off and disconnect power from the unit
2. Remove film feed chute, Wipe the film feed chute with clean lint free cloth (illustrations, see previous page)
3. Remove the 2 screws at the front of the unit
4. With the screws removed gently lift the roller cover to the right, taking care not to pull on this part as there are wires connected to it.
5. With the roller cover out of the way you now have access to fully clean the film rollers using **ONLY 90% and higher** grade rubbing alcohol (lesser percentage grades leave a slimy residue)
6. Once cleaning is complete, replace the roller cover back into position by bringing it up and back over to the left aligning the screw holes with the base
7. Replace the 2 screws, replace the film holder chute and close the cover

Deep Cleaning the rollers on new 2021 designed units

[Video 1](#) [Video 2](#)



Technical Support

[Download software updates](#)

Select **Product:** **PowerFilm** Studio then select Downloads Tab

Reference Video links

- [Organizing, sorting and cleaning](#)

- Proper insertion of the film feed chute
 - Sorting, and inserting negatives
 - Cleaning dirty films
 - Information on unsuitable films for scanning

- [Loading & Scanning your negatives](#)

- Loading capacity
 - Configuring scan settings
 - Final scan process

- [Cleaning inside your scanner](#)

- Demonstrates how to clean the feed rollers to avoid dust lines in images

- [Deep Cleaning the rollers on new 2021 designed units](#)

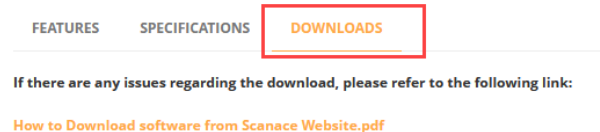
- Deep cleaning the rollers (Newer Models)

- [Cleaning Scan Area](#)

- Demonstrates how to clean the scan rollers and scan area using bulb blower and 90%+ Rubbing alcohol

- [Removing stuck film](#)

- Steps to remove stuck film strip



Customer Support: Or **email us directly** at [Support](#), if emailing direct please provide the serial # off the scanner. Also please provide your computer operating system, and detailed information about your current issue.